



Energy Production System

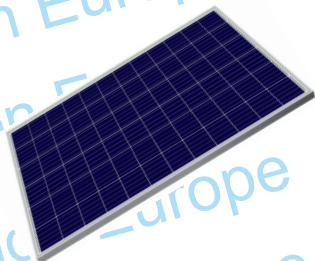
LL12-50

Model LL12-50
Power of inverter 12 kW
Annual production >50 000 kWh
Output voltage 380 / 400 V, 3-phase

> 50 000 kWh / year

Product	Technical description	Qty
---------	-----------------------	-----

Solar panel
Mono 400-72



Power 400 W
Weight 23.5 kg
Measurements 1980 x 1002 x 35 mm
15 pcs

Inverter
12 kW, 3-phase



Power 12 kW
Voltage 380/400 V
Model Amplification Inverter
1 pc

MPPT-charger



Current Compatible to Inverter
Model High Frequency Amplifier
1 pc

Battery 12.5 kWh
LiFePO4



Capacity 12.5 kWh
Voltage 48 V
Model LiFePO4
3 pcs

Protection switch
2-poles.



Voltage 1000 V
Current 250 A
3 pcs

Product	Technical description	Qty
---------	-----------------------	-----

Cable



Core Colours

10 mm²
Red and black

100 m

Connectors

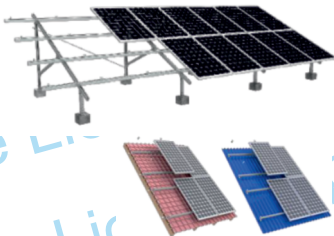


Type Voltage Colours

Mc4
1000 V
Red and black

50 pcs

Mountings



Material Type

Aluminium
For ground or roof installation

1 set

Basic installation



Type

Ground or roof installation *)
Includes required installation materials.

*)For the roof of max. 2 floors. A building requiring a special crane, a more challenging location, etc. according to the special offer.